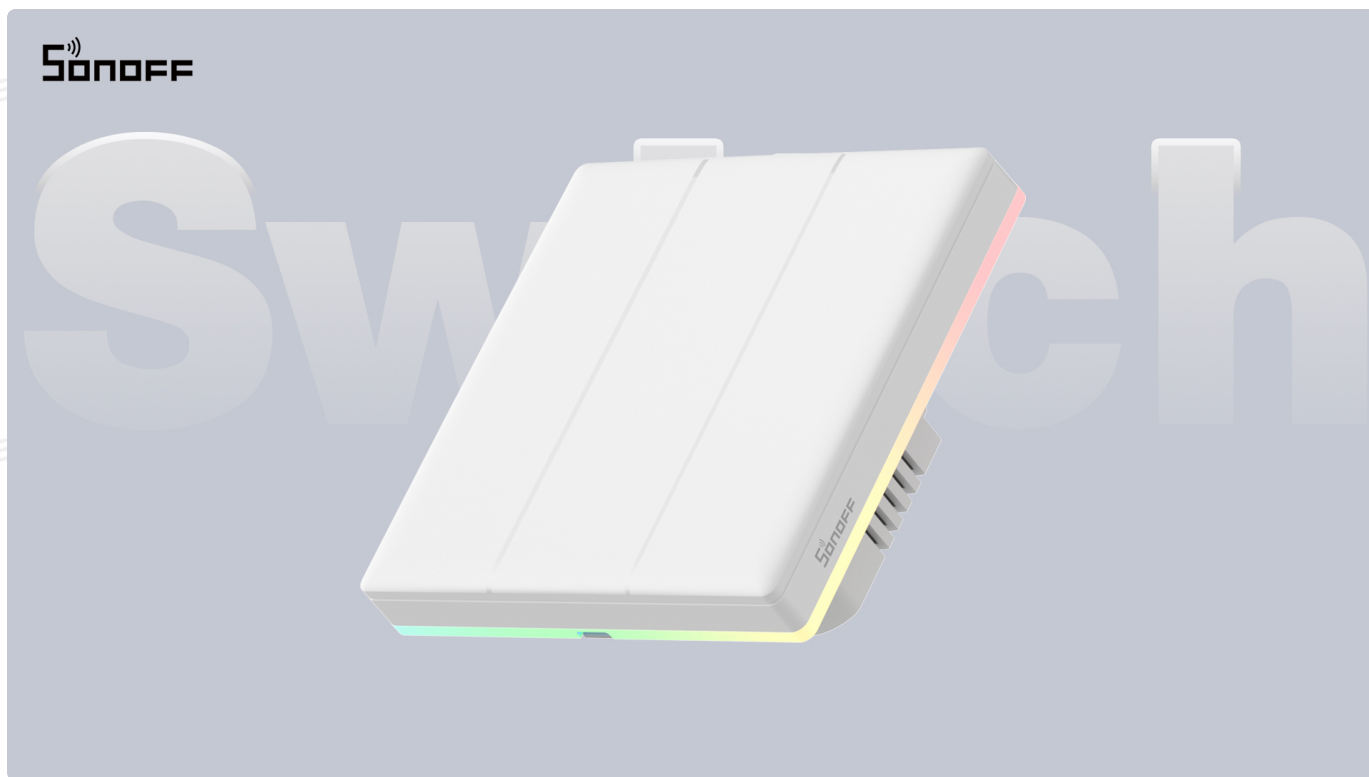


T5-1C/2C/3C/4C-86 (EN)



Smart Touch Wall Switch

User Manual V1.0

Introduction

SONOFF TX Ultimate is a smart touch wall switch with LED lights which will produce sound, light and vibration effects when it is turned on/off. After adding in the eWeLink App, you can remotely control on/off, switch the ambient lighting modes, set timer and smart scene on the phone.



Remote Control



Voice Control



Smart Scene



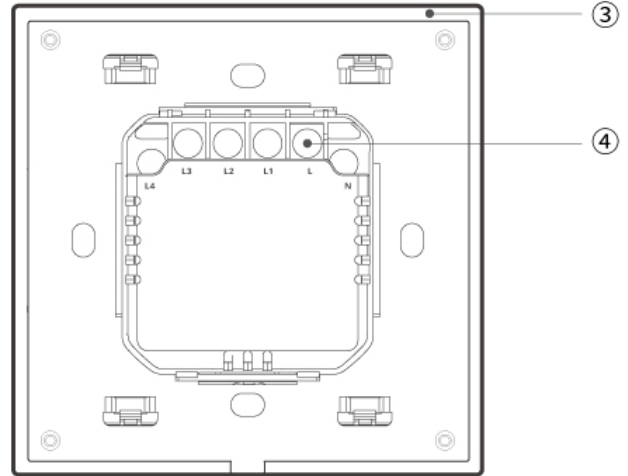
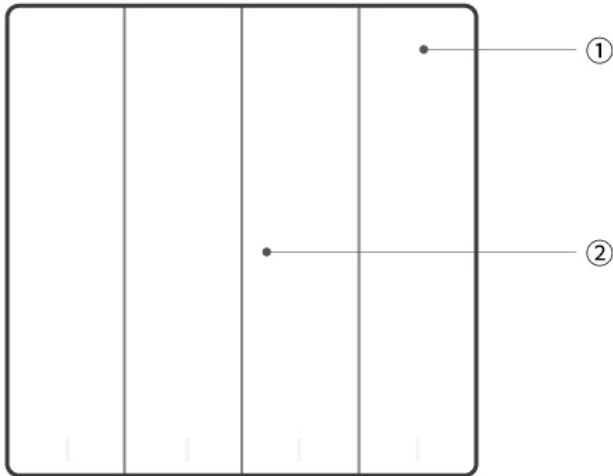
Ambient Lighting Mode



Touch Vibration



Light Effects

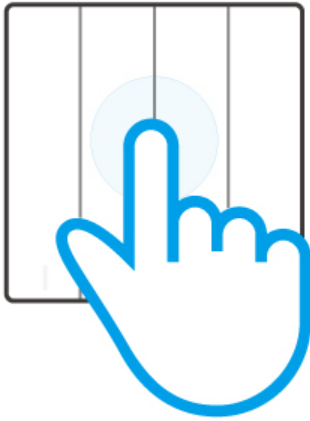


① Switch panel	② Touch control screen	③ Ambient light/Switches LED indicator/Network LED indicator	④ Wiring ports
----------------	------------------------	--	----------------

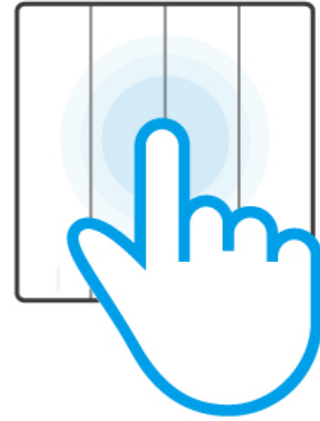
LED Indicator status and instructions

LED indicators	LED indicator status	Instructions
Pairing LED indicator	In the “Cycle mode”	Device is in pairing mode
Network LED indicator	Flashes blue quickly once	Device is not connected to router
	Flashes blue quickly twice	Device is connected to the router but not to the cloud

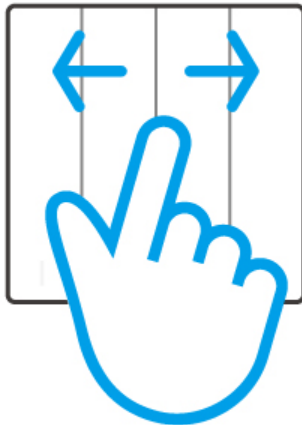
Operation instruction



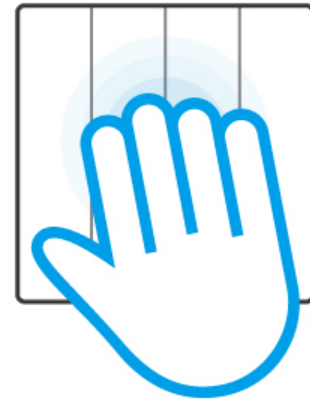
Quick click



Long press



Swipe



Multi-point click

Operations	Instructions	Functions
Quick click	Click the switch panel quickly	Turn on/off the switches and trigger the smart scenes
Long press	Long press the switch panel for 5s	Make the device enter the pairing mode
Swipe	Swipe on the switch panel and ensure the swipe distance exceeds 50% of it <ul style="list-style-type: none"> • T5-86 supports left/right swipe 	Trigger the smart scene

Multi-point click	Multiple fingers click the switch panel	Turn on/off the ambient light manually
-------------------	---	--

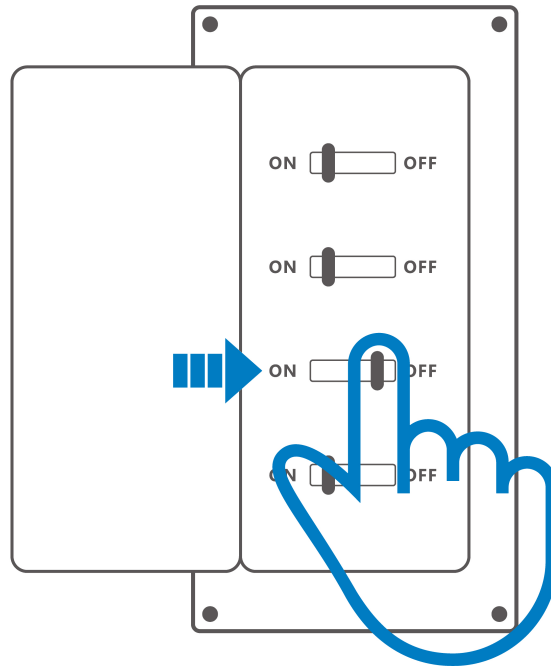
Specifications

Model	T5-1C-86/T5-2C-86/T5-3C-86/T5-4C-86
MCU	ESP32
Input	1C: 100-240V ~ 50/60Hz Max 5A 2C: 100-240V ~ 50/60Hz Max 10A 3C: 100-240V ~ 50/60Hz Max 15A 4C: 100-240V ~ 50/60Hz Max 16A
Output	1C: 100-240V ~ 50/60Hz Max 5A 2C: 100-240V ~ 50/60Hz Max 5A/Gang 10A/Total 3C: 100-240V ~ 50/60Hz Max 5A/Gang 15A/Total 4C: 100-240V ~ 50/60Hz Max 4A/Gang 16A/Total
LED load	1C: 150W Max@240V,75W Max@100V 2C: 150W Max@240V/Gang,75W Max@100V/Gang 3C: 150W Max@240V/Gang,75W Max@100V/Gang 4C: 150W Max@240V/Gang,75W Max@100V/Gang
Wireless connection	IEEE 802.11b/g/n 2.4GHz
Net weight	1C(164g), 2C(168.5g), 3C(174g), 4C(181g)
Product dimension	86x86x39mm
Colour	White
Casing materials	PC +CRS
Applicable place	Indoor
Working temperature	-10°C ~ 40°C

Working humidity	5~95%RH, non-condensing
Certification	CE/SRRC/RoHS
Executive standard	EN IEC 60669-2-1

Installation

1. Power off

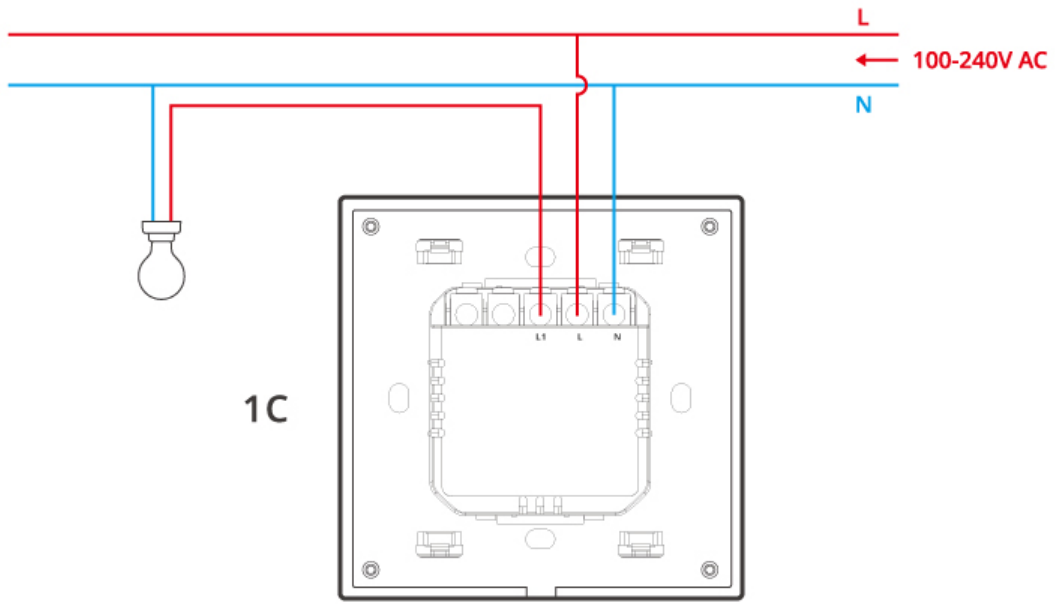


*Please install and maintain the device by a professional electrician. To avoid electric shock hazard, do not operate any connection or contact the terminal connector while the device is powered on!

2. Wiring instruction

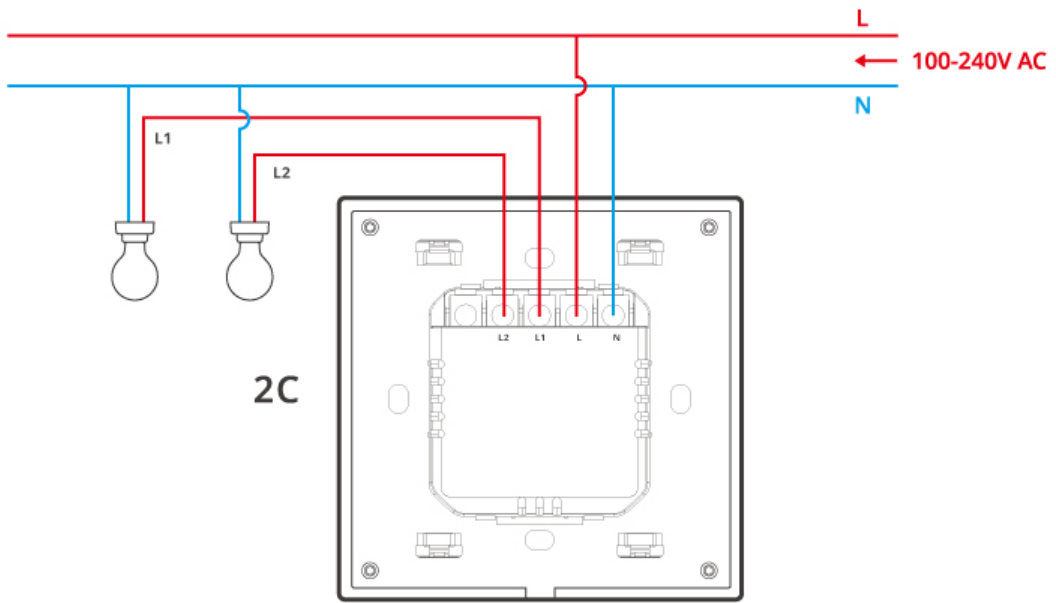
- Switch mode

ITEAD - 蘇登



ITEAD - 蘇登

ITEAD - 蘇登(2988816)



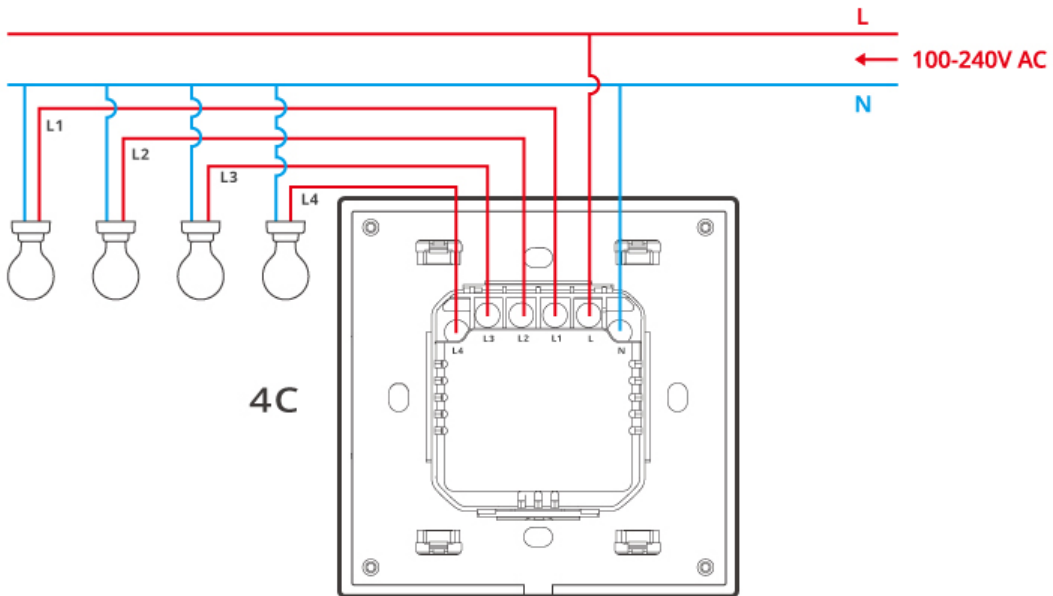
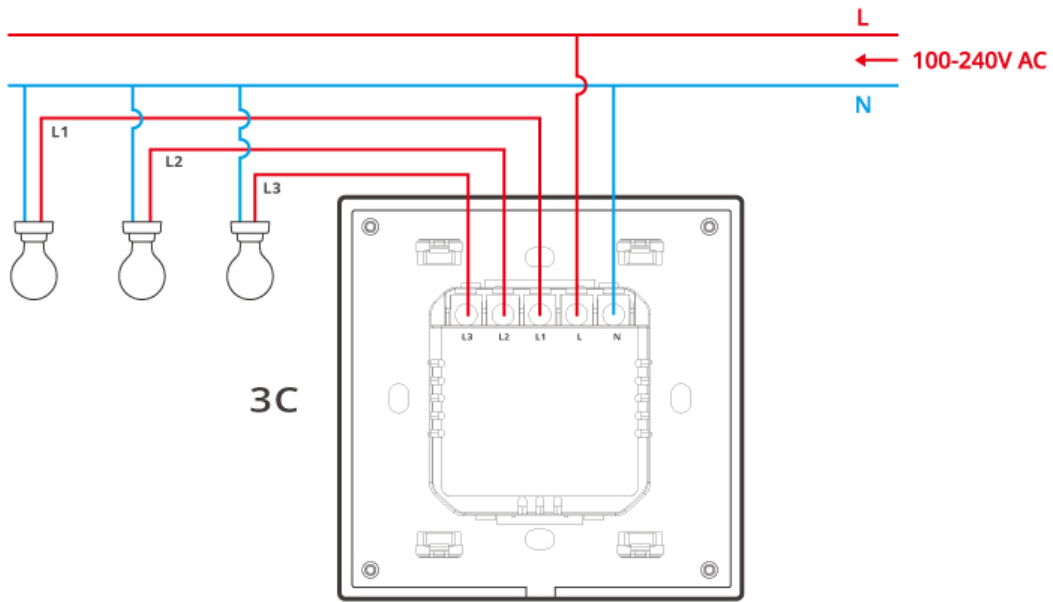
ITEAD - 蘇登

ITEAD - 蘇登(2988816)

ITEAD - 蘇登(2988816)

ITEAD - 蘇登(2988816)

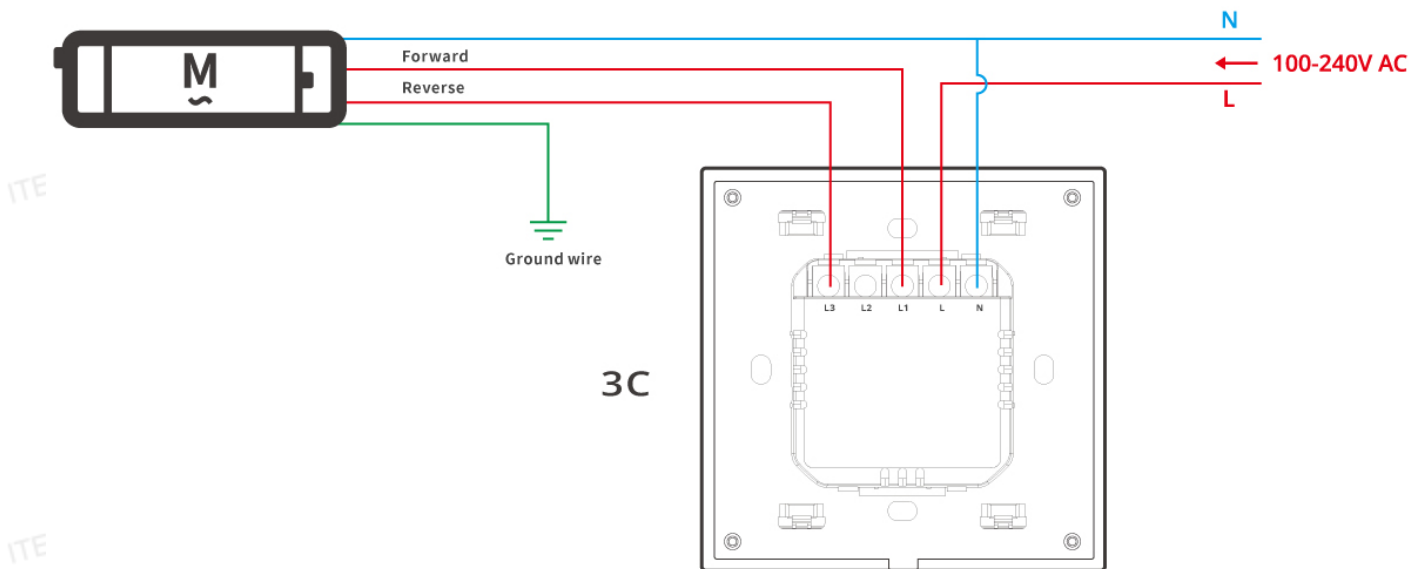
ITEAD - 蘇登(2988816)



*To ensure the safety of your electrical installation, it's essential either a Miniature Circuit Breaker (MCB) or a Residual Current operated Circuit-breaker with Integral Overcurrent protection(RCBO) with an electrical rating of 10A (T5-1C-86, T5-2C-86), 16A (T5-3C-86, T5-4C-86) has been installed before the TX Ultimate. (Not include motor load)

*Make sure all wires are connected correctly.

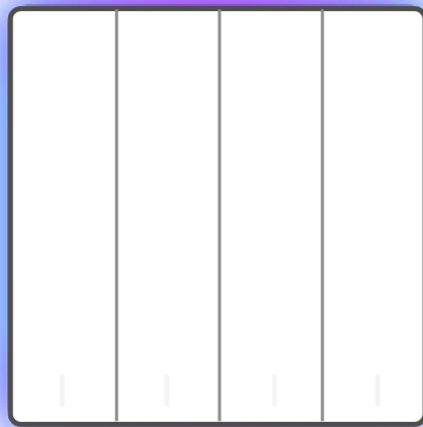
- Motor mode



*Only T5-3C-86 supports switching to motor mode.

3. Power on

After powering on, the device will enter the Bluetooth pairing mode by default during the first use and the LED frame light will light in the "Cycle mode."



*The device will exit the Bluetooth pairing mode when it isn't paired successfully within 30mins. If you want to access the pairing mode again, touch the wall switch panel for 5s until the LED frame light lights in the "Cycle mode".

Add device

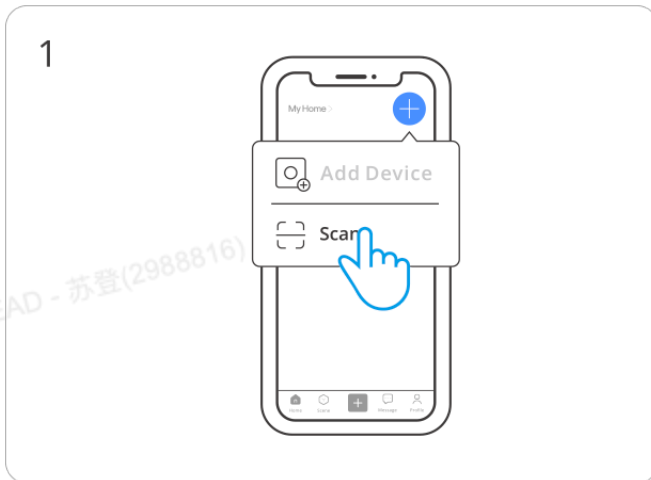
eWeLink App Pairing

1. Download the "eWeLink" App

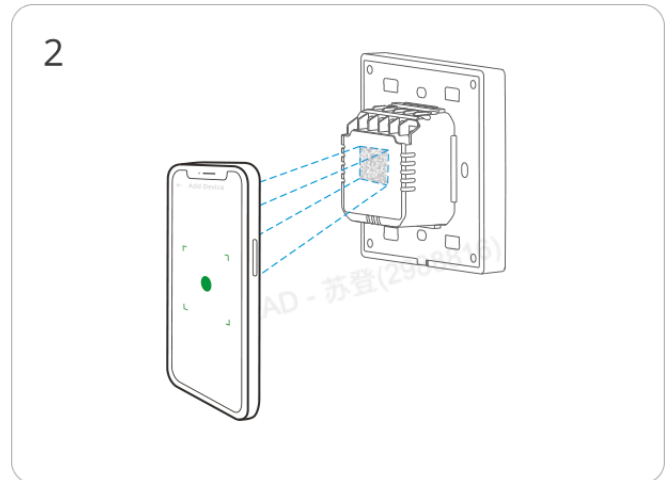
Please download the "eWeLink" App from Google Play Store or Apple App Store.



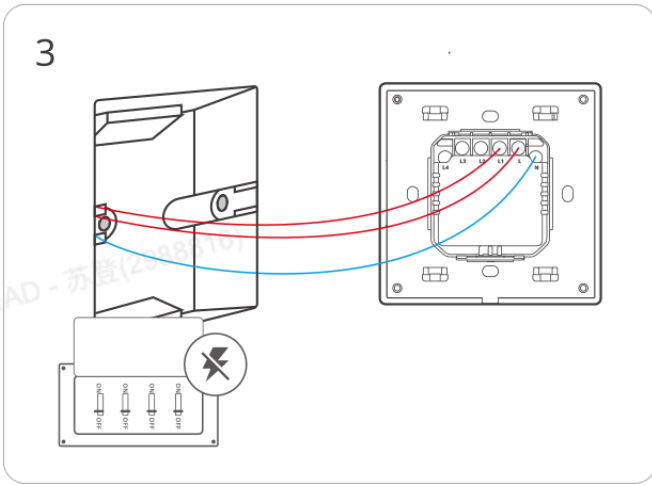
2. Add device



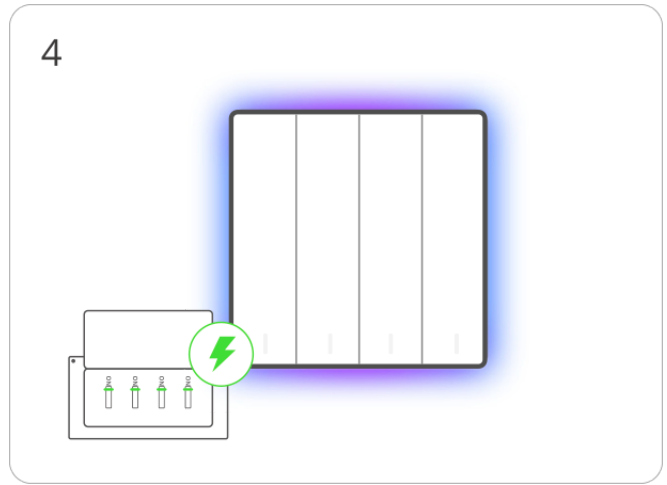
Enter "Scan"



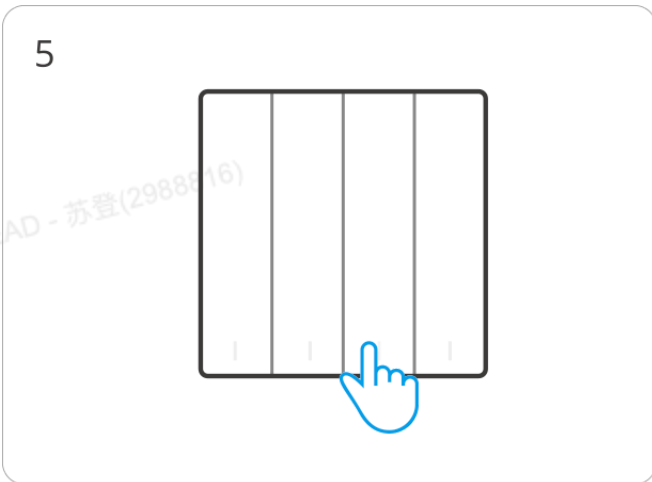
Scan the QR code on the device



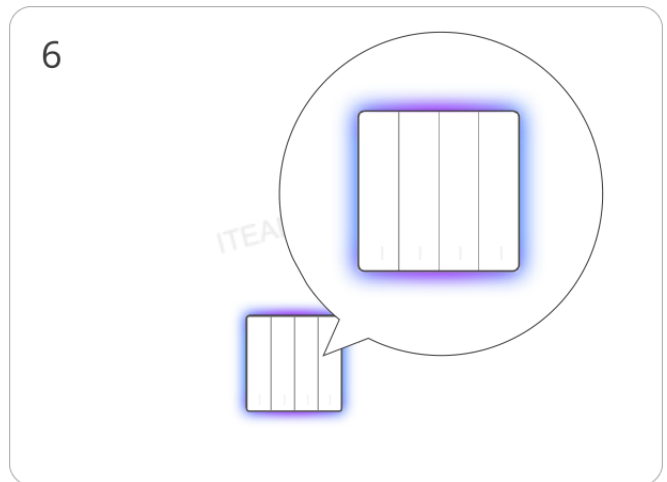
Please follow the wiring instructions to connect the wires (ensure power is disconnected in advance and consult an electrician if needed)



Power on the device



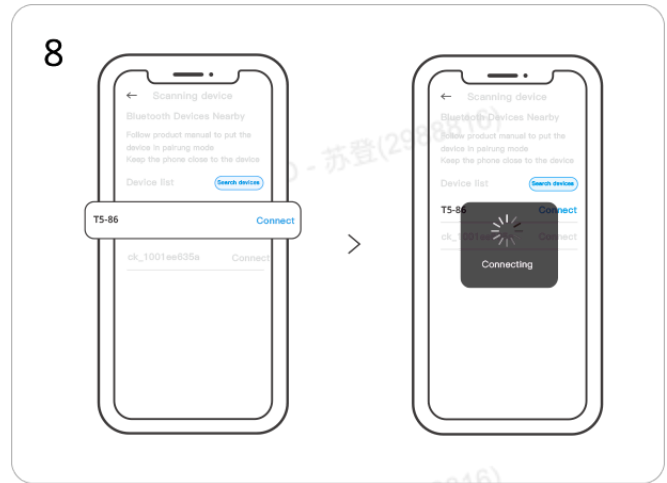
Long press the button for 5 seconds



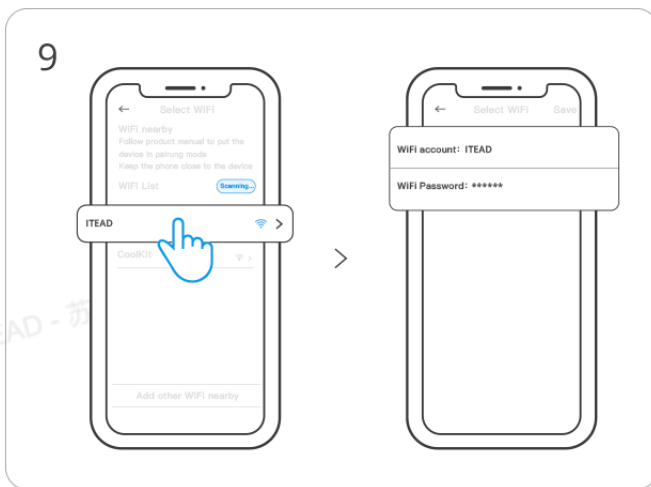
Check Wi-Fi LED indicator flashing status (Cycle mode.)



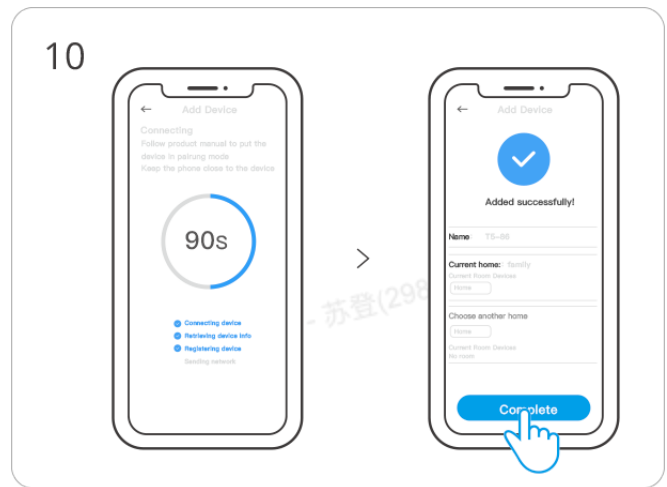
Select "Add Device"



Search for the device and start connecting



Select the "Wi-Fi" network and enter the password.



Device "Added completely".

Motor mode

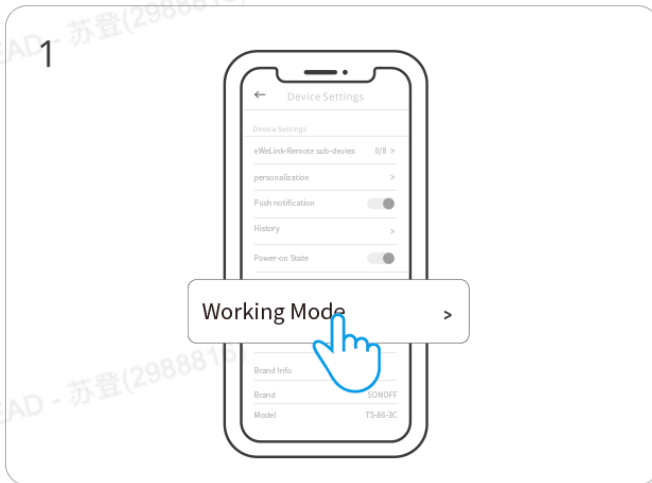
After wiring based on Motor mode, you can switch the Working mode to Motor mode in the App, making traditional motors smart and controllable through methods such as smartphones, smart scenes, and voice commands.

1. Applicable load: Can control bidirectional AC motors, such as roller shutters, blinds, curtains, and awnings;
 - Only supports motors with limited position functions.
 - Maximum motor load current: 1A

2. Working methods:

- Connect the positive rotation line to channel one to control positive rotation/opening.
- Connect the reverse rotation line to channel three to control reverse rotation/closing.

3. App settings: After adding the device, switch the Working mode to Motor mode following the steps in the figures.

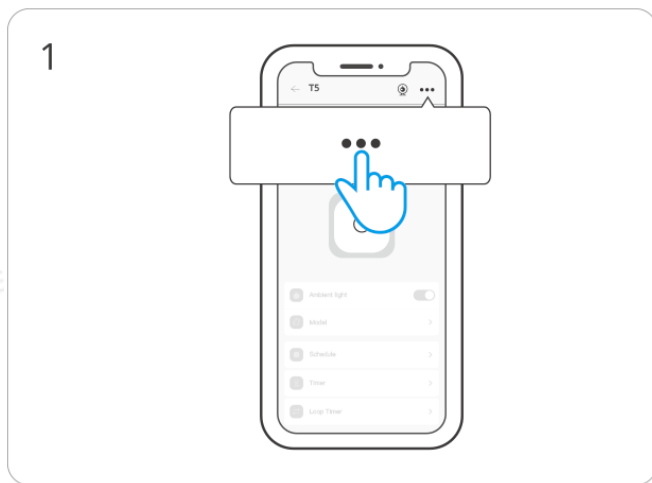


Select "Working Mode" on the Device Settings page.

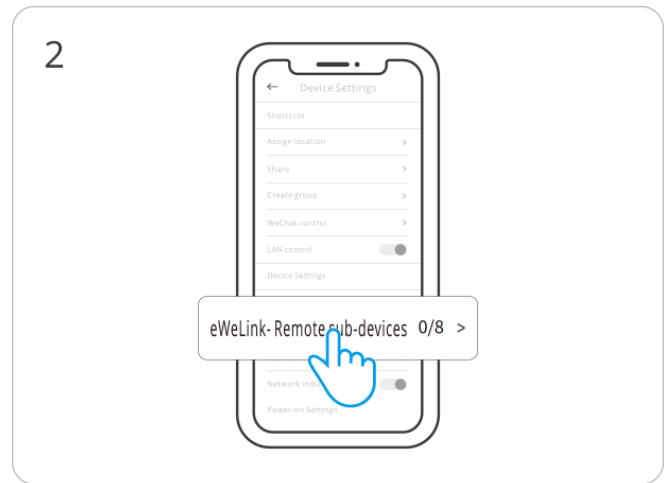


Select "Motor Mode".

Add eWeLink-Remote-devices



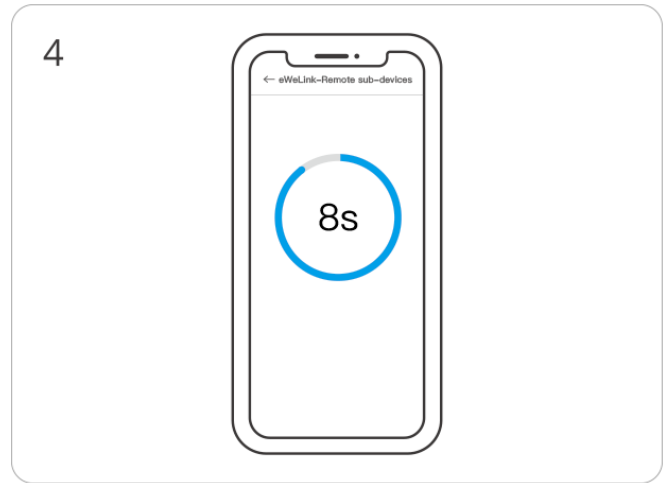
Click "... " on the homepage of T5.



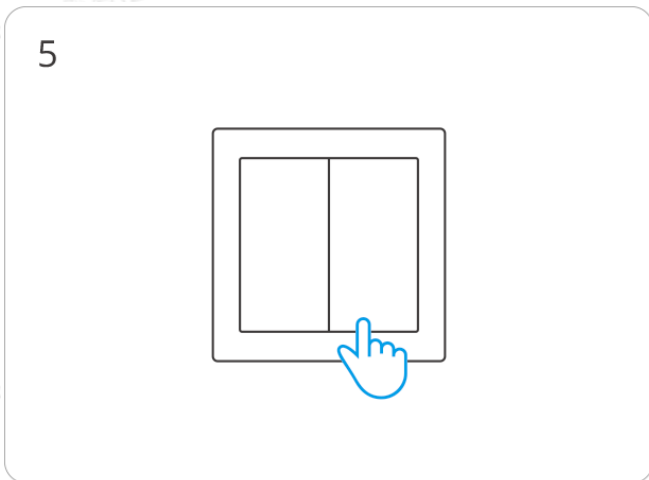
Click "eWeLink-Remote-devices" on the Device Settings page.



Click "Add" button, and eWeLink-Remote gateway will enter the learning mode



Click the sub-device button within 10 seconds



Click the button on the sub-device to add the device

Device Factory Reset

- After "Delete the Device" in the eWeLink App
- For devices previously successfully added to eWeLink, perform a new pairing using a different eWeLink account

SAR Warning

Under normal use of conditions, this equipment should be kept a separation distance of at least 20 cm between the antenna and the body of the user.

Dans des conditions normales d'utilisation, cet équipement doit être maintenu à une distance d'au moins 20 cm entre l'antenne et le corps de l'utilisateur.

WEEE Warning



WEEE Disposal and Recycling Information All products bearing this symbol are waste electrical and electronic equipment (WEEE as in directive 2012/19/EU) which should not be mixed with unsorted household waste. Instead, you should protect human health and the environment by handing over your waste equipment to a designated collection point for the recycling of waste electrical and electronic equipment, appointed by the government or local authorities. Correct disposal and recycling will help prevent potential negative consequences to the environment and human health. Please contact the installer or local authorities for more information about the location as well as terms and conditions of such collection points.

EU Declaration of Conformity

Hereby, Shenzhen Sonoff Technologies Co., Ltd declares that the radio equipment type [T5-1C-86, T5-2C-86, T5-3C-86, T5-4C-86] is in compliance with Directive 2014/53/EU. The full text of the EU declaration of conformity is available at the following internet address:

<https://sonoff.tech/compliance/>

Scatola	Scatola	Manuale	Pellicola	Borsa
PAP 20	PAP 21	PAP 22	PET 1	LDPE 4
Carta	Carta	Carta	Plastica	Plastica
RACCOLTA DIFFERENZIATA				
<p>Verifica le disposizioni del tuo Comune. Separa le componenti e conferiscile in modo corretto.</p>				

EU Operation frequency Range:

Wi-Fi

802.11 b/g/n20: 2412–2472MHz

802.11 n40: 2422–2462MHz

BLE:2402–2480MHz

EU Output Power:

Wi-Fi 2.4G≤20dBm

BLE≤10dBm



Manufacturer: Shenzhen Sonoff Technologies Co., Ltd.

Address: 3F & 6F, Bldg A, No. 663, Bulong Rd, Shenzhen, Guangdong, China

ZIP code: 518000

Service email: support@itead.cc

Website: sonoff.tech

Made in China



Points de collecte sur www.quefairedemesdechets.fr
Privilégiez la réparation ou le don de votre appareil !