

# User Manual MINI-ZBRBS-E (EN)



Zigbee Smart Roller Shutter Wall Switch

User Manual V1.0

## Introduction

This is a Zigbee smart roller shutter wall switch that can easily upgrade regular electric curtains to smart curtains. It supports a maximum 1A load motor and, when paired with a Zigbee gateway, enables remote control via an app, scheduling on/off, and smart interconnection features. It also supports Zigbee signal relay, enhancing the stability of the Zigbee network.



Remote Control



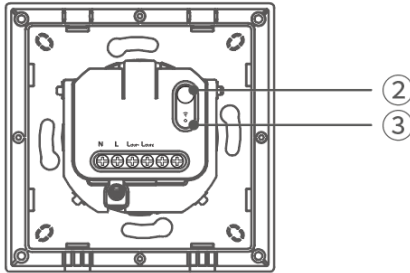
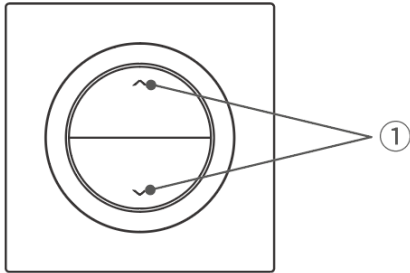
Percentage Control



Smart Timer/Scene



Direction Reverse



### ① Switch Button

- Long press: Open or close the curtains.
- Press any direction button continuously 6 times within 6 seconds: Enter pairing mode.

### ② Device Button

- Press and hold for 5 seconds: Device enters the pairing mode. (Pairing time 3 minutes)
- Press and hold for 10 seconds: The device starts the calibration.

### ③ LED indicator (Blue)

- Slow flash: Device is in Pairing Mode
- Keeps on: Normal connection with the gateway
- Fast flash: Abnormal connection with the gateway
- Keeps off: Pairing failure/Timeout
- Breathing mode (press and hold the button for 10 seconds): The device is in calibration.

## Platform Certification



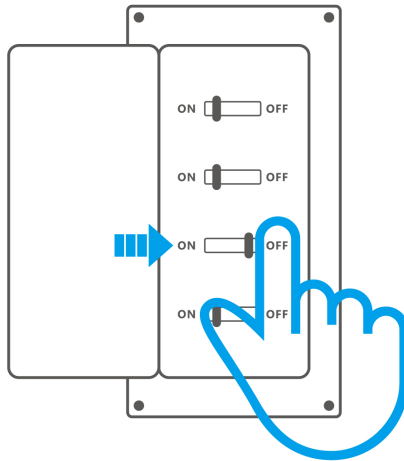
## Specification

Product name	Orb-ZBRBS
Product series	Fusion series
Product type	Zigbee smart roller shutter wall switch
Model	MINI-ZBRBS-E
MCU	EFR32MG21
Rating	100–240V~ 50/60Hz 1A Max (M)
Wireless connectivity	Zigbee 3.0

Net weight	84.1g
Product dimension	86x86x34mm
Color	White
Casing material	PC
Diameter of wiring(recommend)	18AWG to 14AWG SOL/STR copper conductor only
Applicable place	Indoor
Working temperature	10T40 (-10°C~40°C)
Working humidity	5-95%RH, non-condensing
Certification	CE/RoHS

## Installation

### 1. Power off



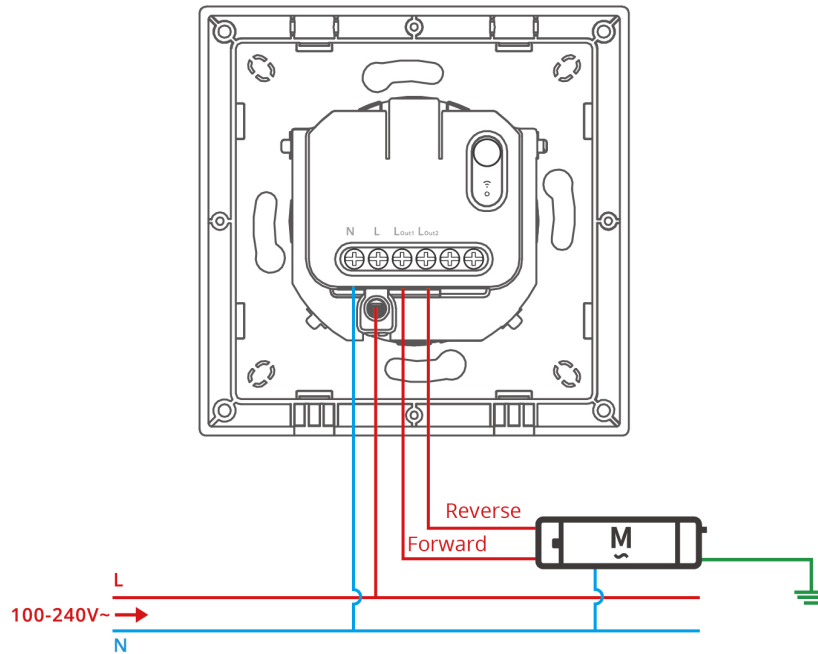
#### WARNING

Please install and maintain the device by a professional electrician. To avoid electric shock hazards, do not operate any connection or contact the terminal connector while the device is powered on!

### 2. Wiring instruction

⚠ To ensure the safety of your electrical installation, it's essential that either a Miniature Circuit Breaker (MCB) or a Residual Current operated Circuit-breaker with Integral Overcurrent protection (RCBO) with an electrical rating of 1A has been installed before the MINI-ZBRBS-E.

⚠ Make sure all wires are connected correctly.

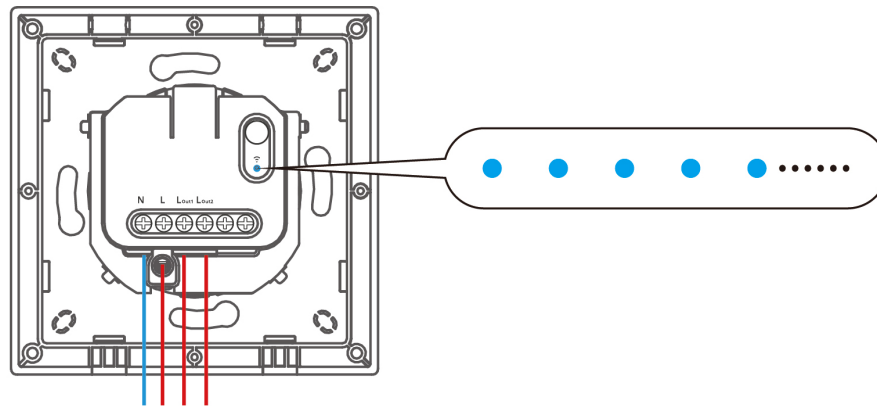


### Instructions for wiring symbols

Terminals		Wires	
N	Neutral Line	N	Neutral Line
L	Live Line	L	Live Line (100–240V~)
L Out1	Live Output Terminal (100–240V~)	Forward Line	Motor Forward Line
L Out2	Live Output Terminal (100–240V~)	Reverse Line	Motor Reverse Line

## 3. Power on

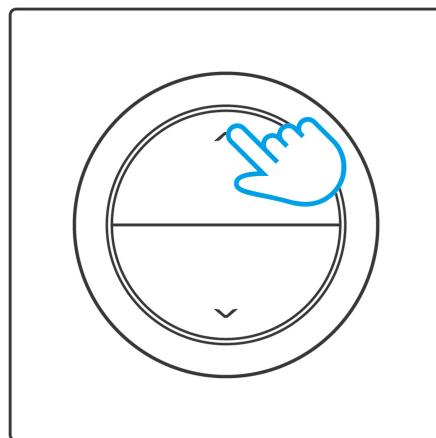
After powering on, the device will enter the pairing mode by default during the first use and the LED signal indicator will "flash slowly".



⚠ The device will exit the pairing mode if you do not operate it within 3mins. When you want to enter the pairing mode again, long press any button on the device for 5 seconds until the signal light “flashes slowly” and release.

⚠ As the maximum one-way allowable continuous operation time for the motor in this device is 2mins, please pause the operation before the curtain reaches its limit position to avoid damaging the motor.

#### 4. Roller shutter direction test



After pressing the switch, check if the roller blind moves in the correct direction. If not, turn off the power, swap the Lout1 and Lout2 wires, then test again.

# Add device

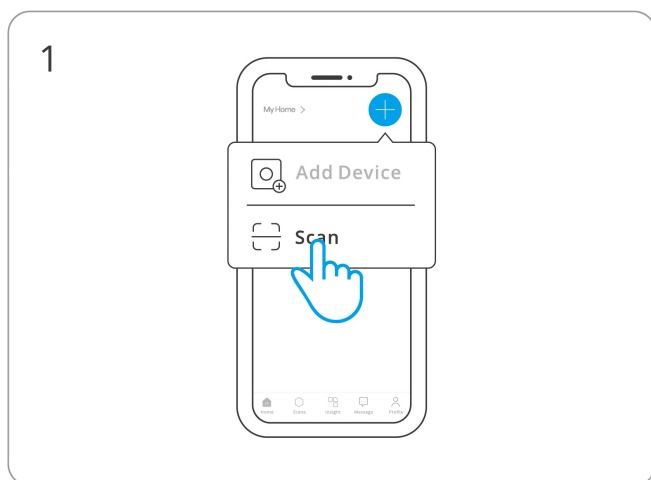
## ① Download the eWeLink App

Please download the "eWeLink" App from [Google Play Store](#) or [Apple App Store](#).

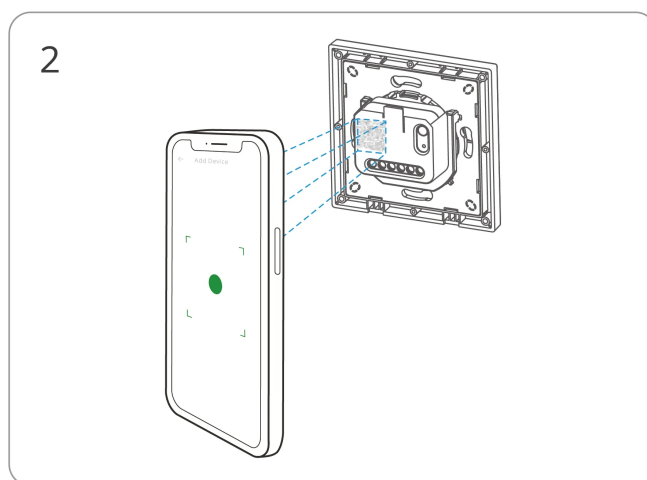


## ② Add SONOFF Zigbee gateway

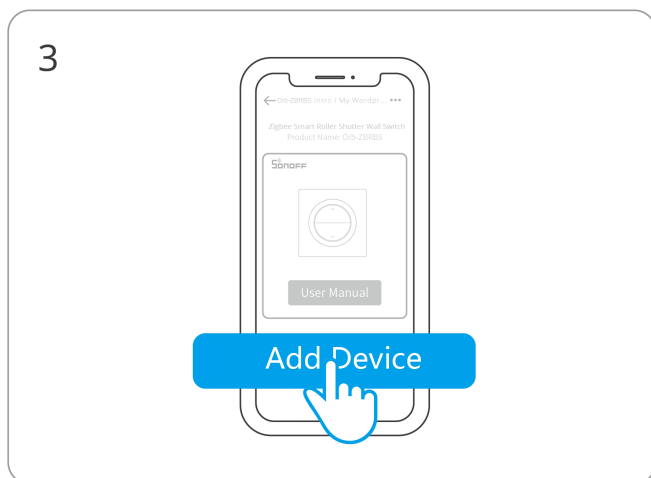
### ② Network configuration



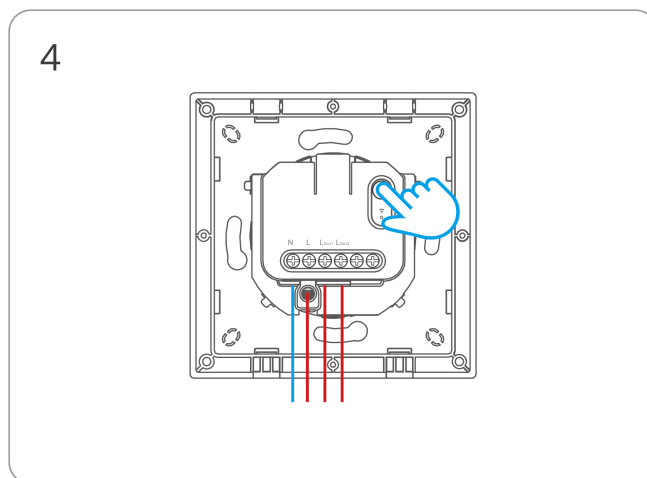
Enter "Scan"



Scan the QR code on the device

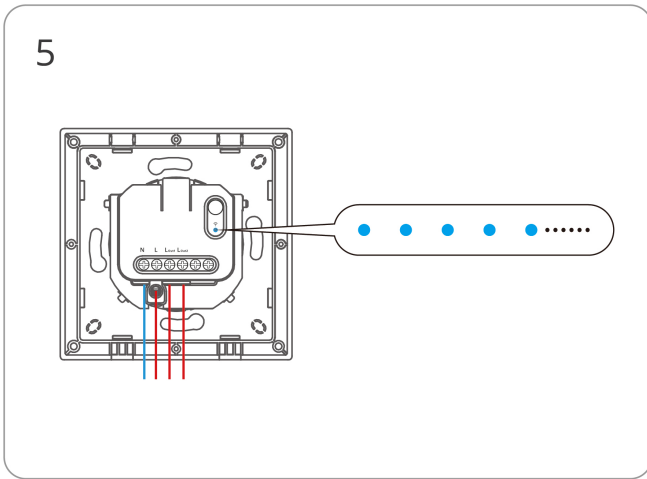


Select "Add Device"

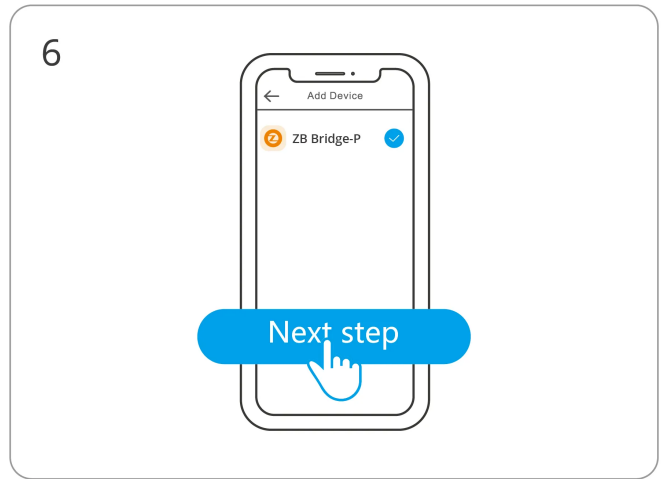


(If the device exits pairing mode)

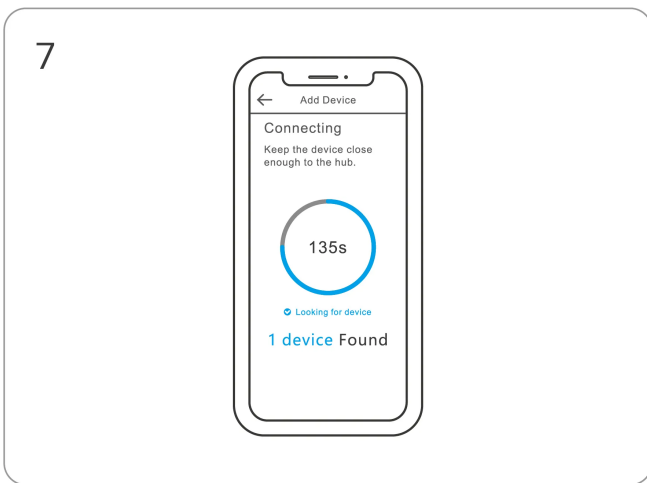
Long press the button for 5 seconds



Check LED indicator flashing status (Slow flash)



Select Zigbee gateway



Wait until the addition is done.

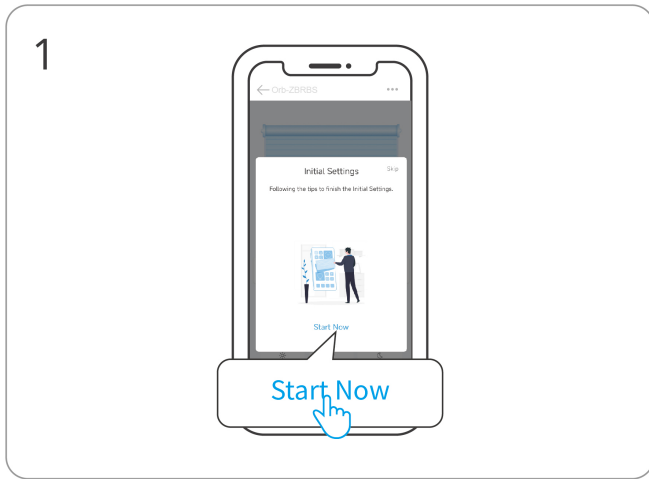
## Travel Calibration

⚠ Using percentage control requires travel calibration. Please select one of the following two calibration options based on your needs.

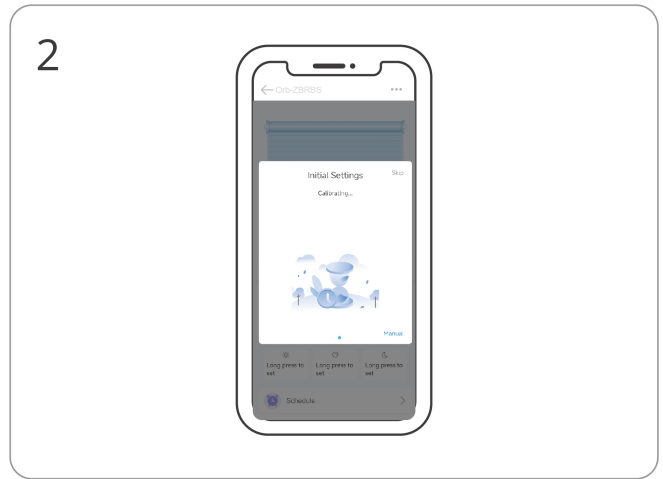
### Method 1:

Users can use the "Travel Calibration" pop-up window in the eWeLink App, or open the "Initial Settings" on the device settings page and then perform "Automatic Calibration" or "Manual Calibration" according to the text instructions in the App.

### Automatic calibration

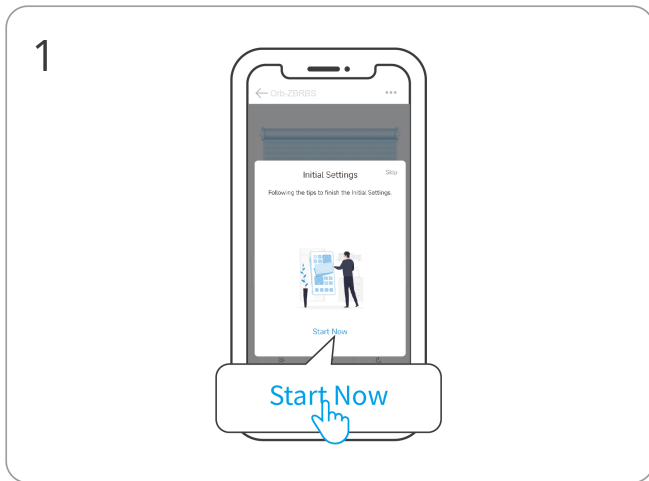


Click "Start Now"

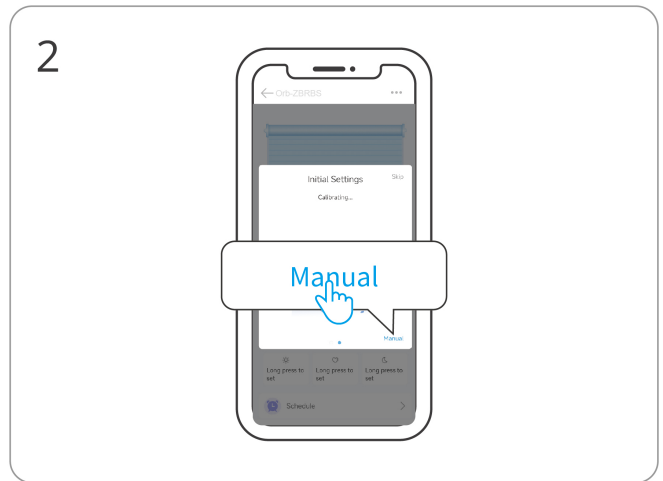


Wait for the automatic calibration to complete

### Manual calibration



Click "Start Now"



Click "Manual"



Select "Next" to mark the "fully open" position



Select "Done" to mark the "fully close" position

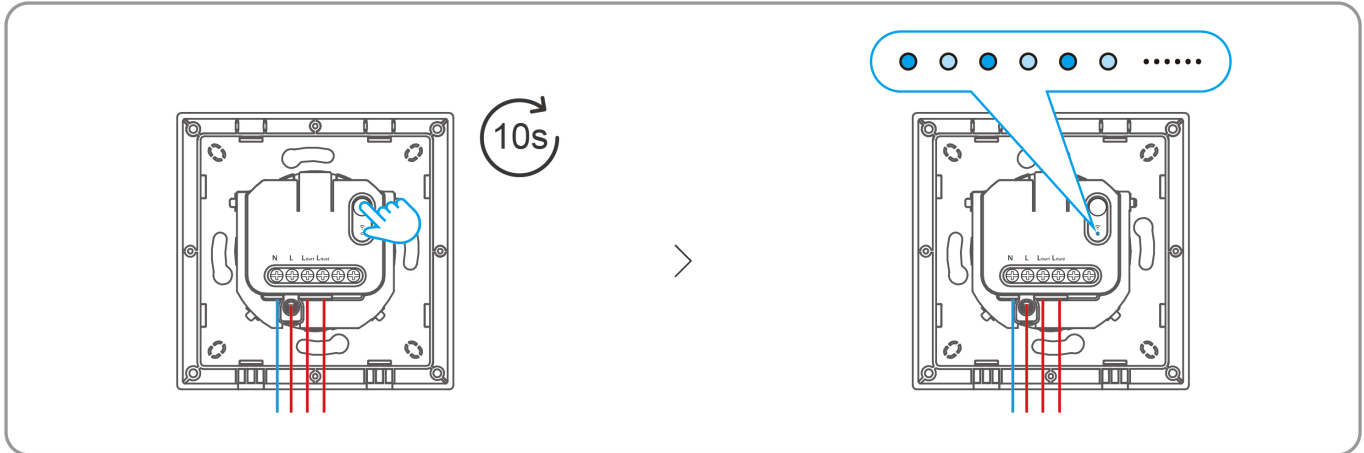
### Method 2:



Users can calibrate the travel distance through the "device button" on the device.

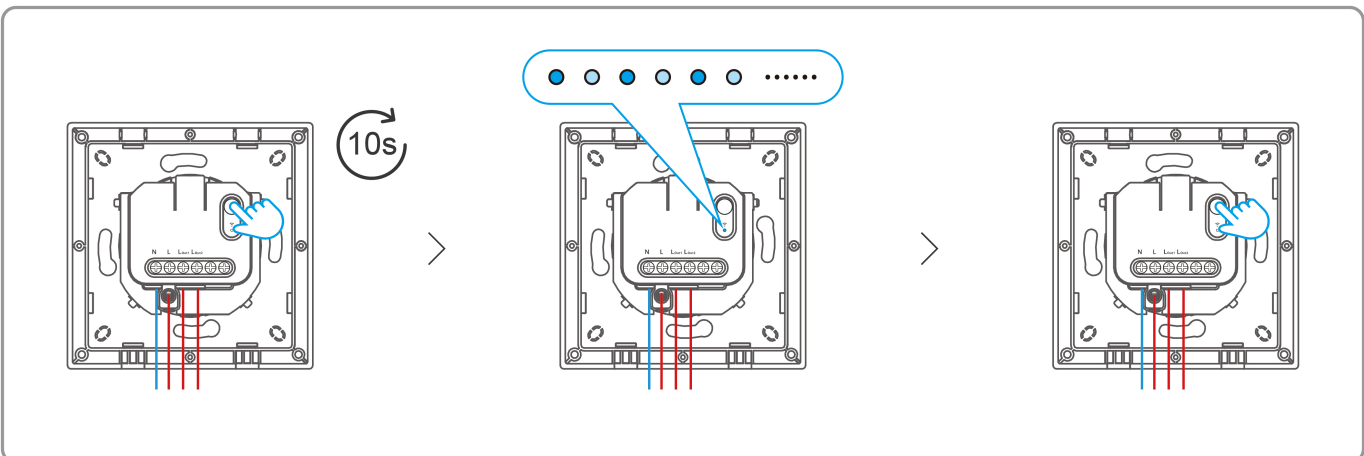
### Automatic calibration

① Press and hold the device button for more than 10 seconds until the LED indicator enters breathing mode. The device will then automatically control the motor for calibration.

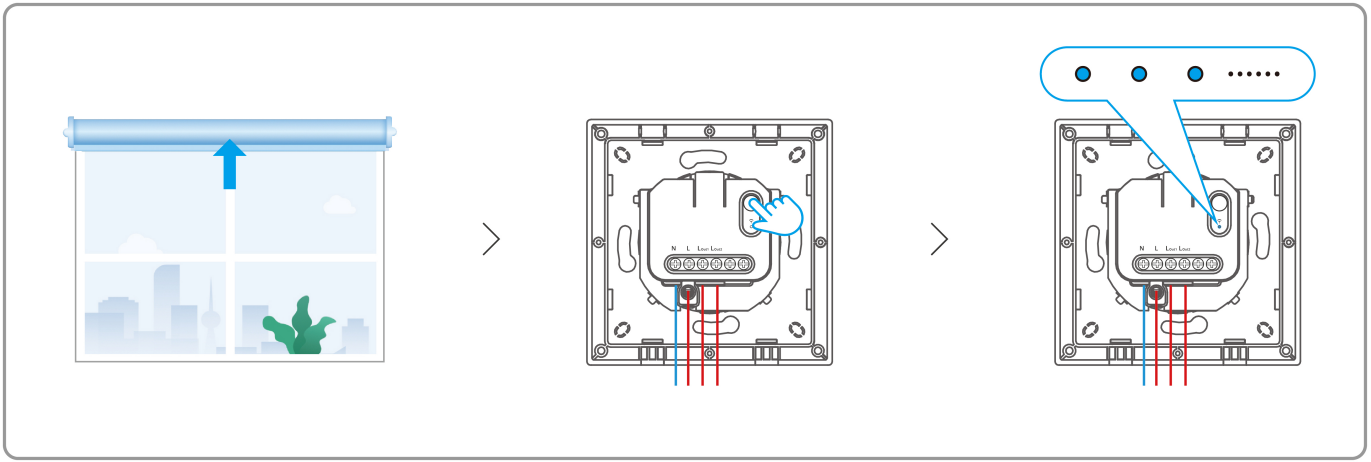


### Manual calibration

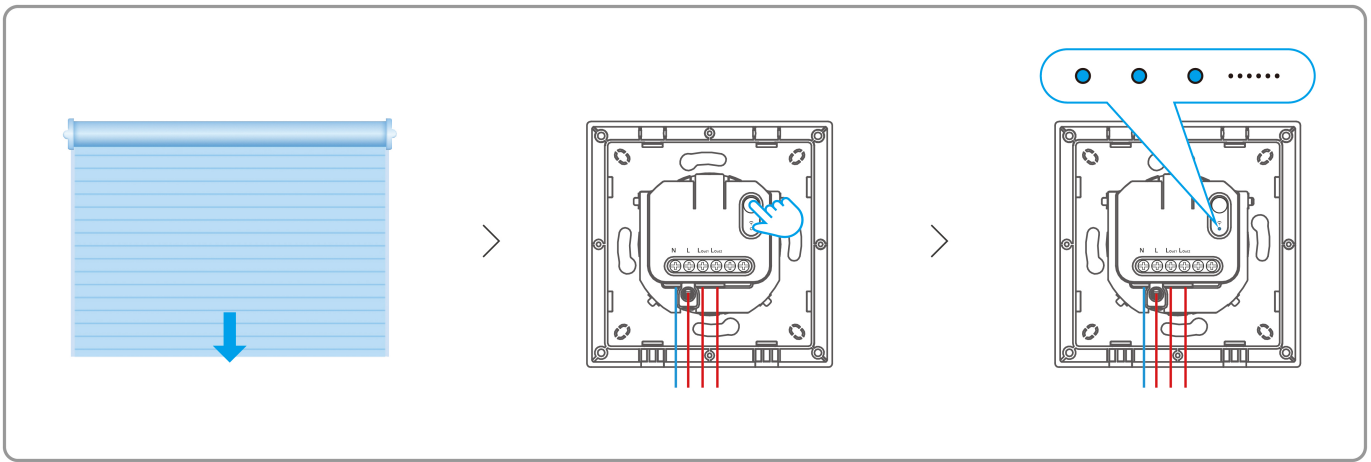
① Press and hold the device button for more than 10 seconds until the LED indicator enters breathing mode. Then, briefly press the device button to enter "Manual Calibration" mode.



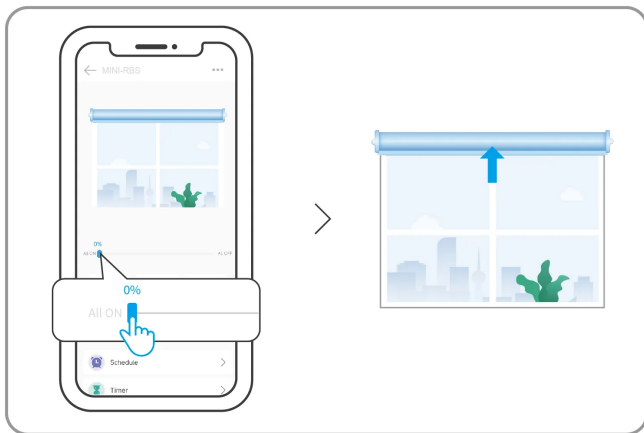
② Manually open the curtains completely, then briefly press the device button until the LED indicator flashes three times.



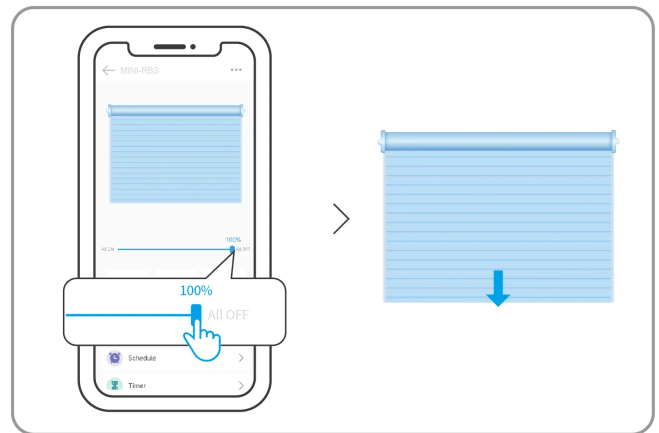
③ Wait for the device to automatically close the curtains, then briefly press the device button again until the LED indicator flashes three times. This completes the "Manual Calibration".



④ Control the device through the App and check the fully open or fully closed positions. If there is any discrepancy, you can recalibrate.



fully open



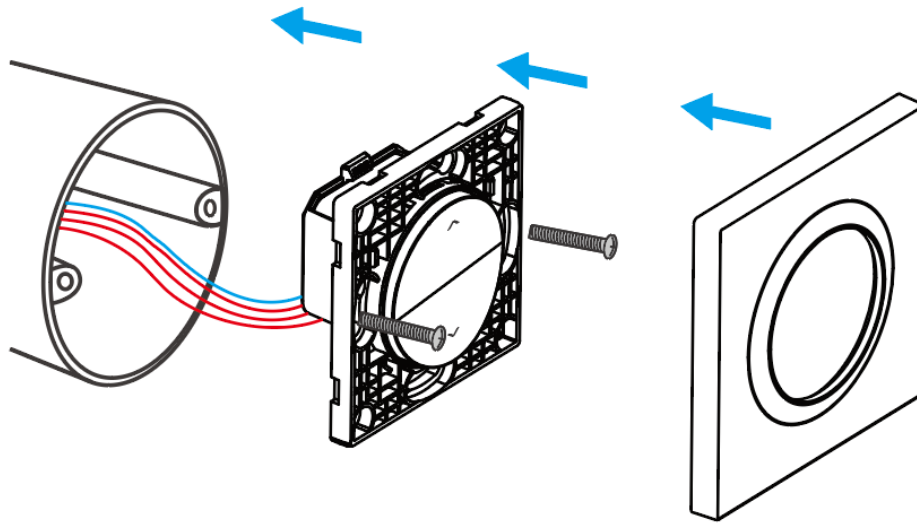
fully closed

## Compatible SONOFF Gateways

Recommended SONOFF gateway models: ZBBridge-P, ZBBridge-U, NSPanel Pro, iHost.

Other compatible SONOFF gateway models: ZBDongle-P, ZBDongle-E.

## Installation



## Factory Reset

Trigger conditions (any one condition met)

- Press and hold the device button for 5 seconds.
- Delete the device on eWeLink.
- Through switch operation: Press any direction button continuously 6 times within 6 seconds.

## EU Declaration of Conformity

Hereby, Shenzhen Sonoff Technologies Co., Ltd. declares that the radio equipment type MINI-ZBRBS-E is in compliance with Directive 2014/53/EU. The full text of the EU declaration of conformity is available at the following internet address: <https://sonoff.tech/compliance/>

## For CE Frequency

EU Operating Frequency Range:

Zigbee: 2405–2480MHz

EU Output Power:

Zigbee≤10dBm

## WEEE Disposal and Recycling Information



WEEE Disposal and Recycling Information All products bearing this symbol are waste electrical and electronic equipment (WEEE as in directive 2012/19/EU) which should not be mixed with unsorted household waste. Instead, you should protect human health and the environment by handing over your waste equipment to a designated collection point for the recycling of waste electrical and electronic equipment, appointed by the government or local authorities. Correct disposal and recycling will help prevent potential negative consequences to the environment and human health. Please contact the installer or local authorities for more information about the location as well as terms and conditions of such collection points.

## Warning

Under normal use of condition, this equipment should be kept at a separation distance of at least 20 cm between the antenna and the body of the user.

Dans des conditions normales d' utilisation, cet équipement doit être maintenu à une distance d' au moins 20 cm entre l' antenne et le corps de l' utilisateur.

Scatola	Manuale	Borsa	Borsa
PAP 21	PAP 22	CPE 7	LDPE 4
Carta	Carta	Plastica	Plastica

RACCOLTA DIFFERENZIATA

Verifica le disposizioni del tuo Comune.

Separa le componenti e conferiscile in modo corretto.



Manufacturer: Shenzhen Sonoff Technologies Co., Ltd.

Address: 3F & 6F, Bldg A, No. 663, Bulong Rd, Shenzhen, Guangdong, China

ZIP code: 518000

Service email: support@itead.cc

Website: sonoff.tech

Made in China



Points de collecte sur [www.quefairedemesdechets.fr](http://www.quefairedemesdechets.fr)  
Privilégiez la réparation ou le don de votre appareil !

