

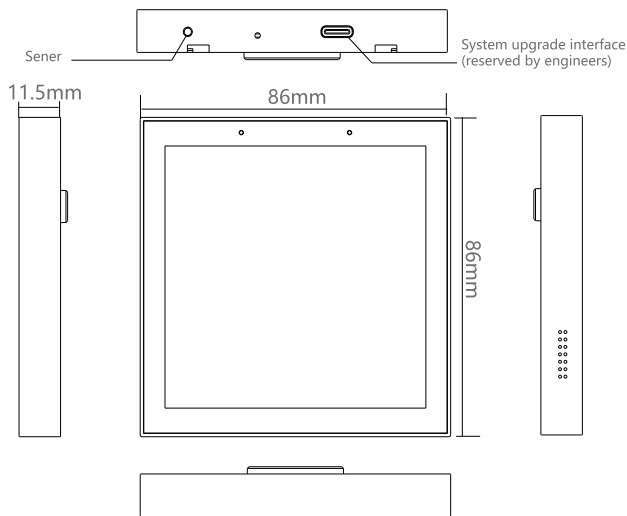
Smart Control Panel

Product Manual

KCP-TH4



Front Screen



Product specifications

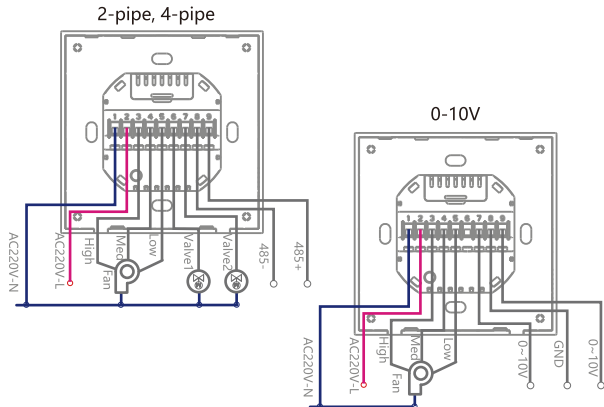
Product name	Smart Control Panel
Screen size	4 inches
Input	95 ~240 VAC, 50/60Hz
Wireless protocol	Wi-Fi,Bluetooth,Zigbee
Ambient Temp.	-5°C-45°C
Ambient Humidity	5 ~ 95 % RH (Non Condensing)
Product size	86×86×11.5mm(without base) including base: 86×86×44.5mm

Wireless For EU Type	Frequency	Max. Power
Wi-Fi	2400-2483.5MHz	20 dBm
Bluetooth	2400-2483.5MHz	10 dBm
Zigbee	2400-2483.5MHz	12 dBm

RISK OF FIRE
Install only in concrete
or other non-combustible wall

Wiring

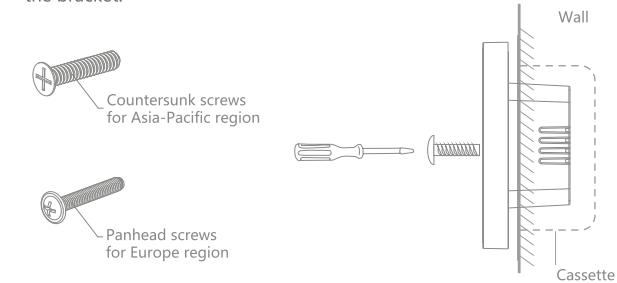
This version is equipped with a European standard base, supports fan coil thermostat function, can be adapted to 2-pipe, 4-pipe, 0-10v DC output fan coil thermostat function, optional 485, the specific wiring method is as follows



- 1.The distribution box must be plastic and non-hygroscopic material, with a minimum fire-resistance rating of 5V.
- 2.There should be no other metal conductive objects in the distribution box.
- 3.The distance between the opening of the product body and the opening of the junction box should be at least 1 cm.
- 4.This product is powered by the neutral wire,please arrange the neutral wire in advance.

Installation instructions

- Check the wiring to make sure that the copper wire is in good contact with the terminal and there is no exposed wire.
- Use the correct type of screws, countersunk screws for Asia-Pacificregion, panhead screws for Europe region, to fix the base to thecassette, and then buckle back the panel.
- Please note that the screws should not be tightened too tightly during the installation process to avoid deformation or damage tothe screen or hardware.
- If you encounter any problem with the installation, do not press toohard to force the installation. You should level the wall first and check the bracket.



Operating Instructions

- 1.Download and open the app

① Search for "Smartlife" in Apple Store or Google Play (Fig 2.1) or scan the QR code on the instructions to download and nstall the App(Fig 2.2).



Fig 2.1



Fig 2.2 IOS/Android

- ② For the first-time use, please click the "Register "button to register an account; If you already have an account, click the "Login" button.

For first-time use of this thermostat, ensure that the wiring is correctly installed. Once confirmed, turn on the power switch. The screen will light up and guide you through the initial setup process.

2. After entering the welcome interface, tap the screen to select your preferred language (Chinese and English are available). Then, connect and configure your network settings (only supports **2.4GHz** network).



Fig 1.1



Fig 1.2



Fig 1.3

3. Connection Settings

Turn on your phone' s Bluetooth and Wi-Fi, then open the app. Scan the QR code on the device to configure the network (Fig. 2.3-2.4). After successful commissioning, follow the on-screen instructions to complete the setup.



Fig 2.3



Fig 2.4

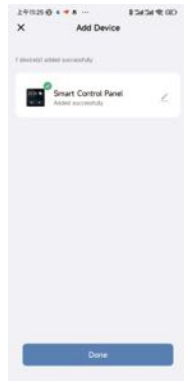
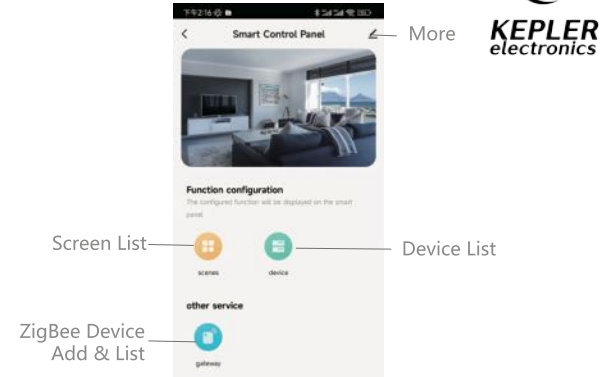


Fig 2.5

Smart control panel APP interface

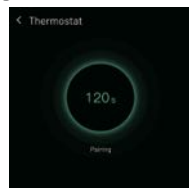
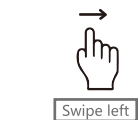


The smart control panel supports linked control of multiple categories and quantities of Tuya smart devices.

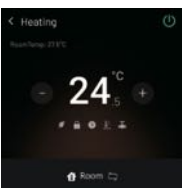
1. ZigBee Device Addition

The smart control panel has a built-in ZigBee gateway function, allowing you to add ZigBee-compatible smart devices.

For example: when using the device for the first time, you need to add the local thermostat. Swipe left on the main screen to enter the configuration page, tap the pairing icon, and open the phone app. Follow the on-screen instructions to complete the setup, as shown in the figure below (Fig3.1-3.4).



Swipe Left to 2nd (local thermostat)



Added successfully



Fig 3.1

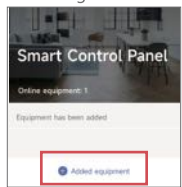


Fig 3.2

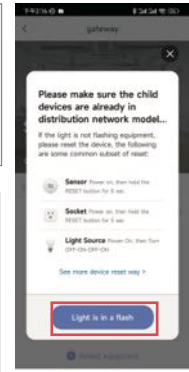


Fig 3.3



Fig 3.4

2. Wi-Fi Device Addition
The steps to add Wi-Fi enabled smart devices are shown in the figures below (Fig. 4.1-4.3).

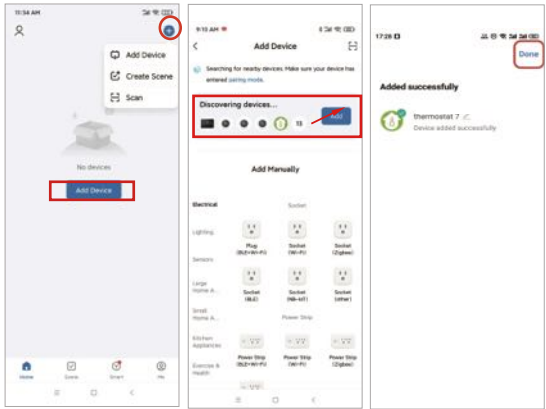


Fig 4.1 Fig 4.2 Fig 4.3

3.Scene Creation and Execution
The application scenario needs to be created in the Smart Life app. Enter the app' s homepage, select the "Scene" function, then click **Create Scene** → **Launch Tap-to-Run** (Fig. 5.1-5.3).

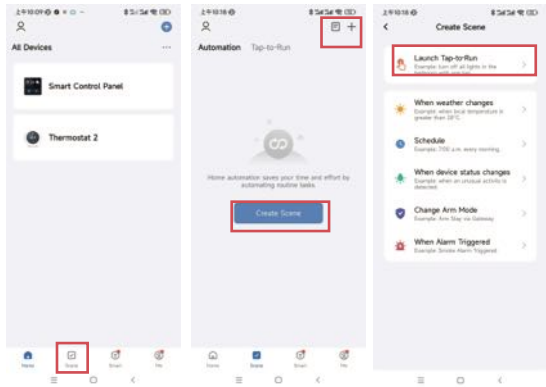


Fig 5.1 Fig 5.2 Fig 5.3

After completing the above steps, select the option to **Control a Single Device** → **Choose the controlled device** → **Perform the control operation** (the available operations on this interface may vary depending on the smart control product). Save the settings to create the scene (Fig. 5.4-5.9).

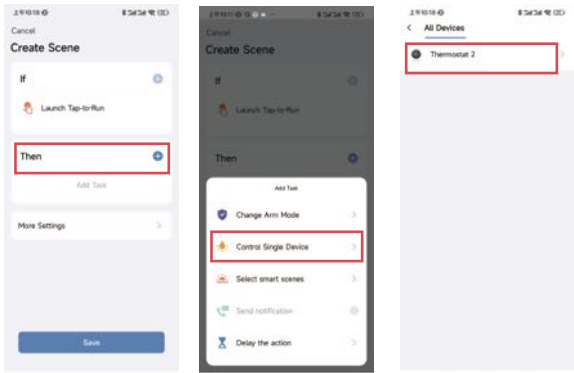


Fig 5.4 Fig 5.5 Fig 5.6

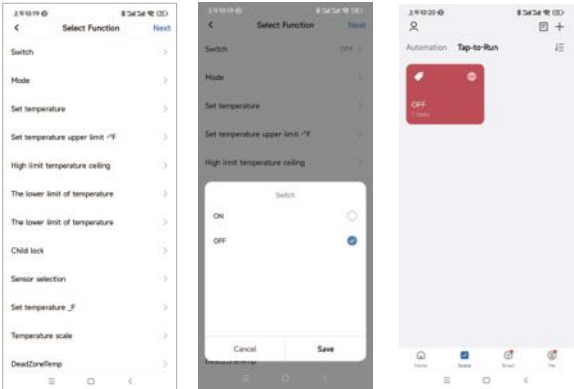


Fig 5.7 Fig 5.8 Fig 5.9

The scenes created in the app and the smart devices added can be viewed in detail on the app interface. Successfully added content can be synchroni zed to the host device (Fig 5.10-5.12)

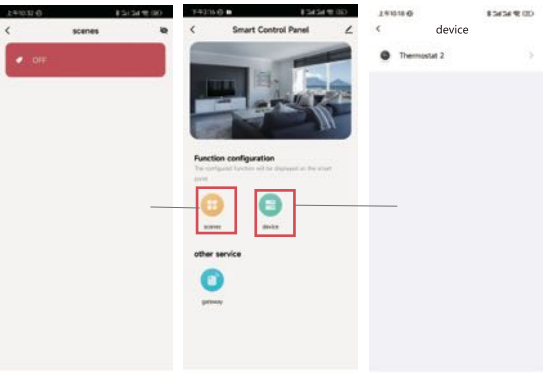
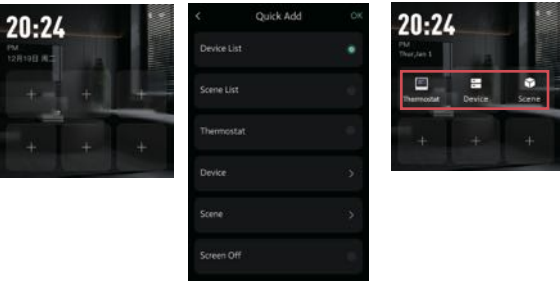


Fig 5.10 Fig 5.11 Fig 5.12

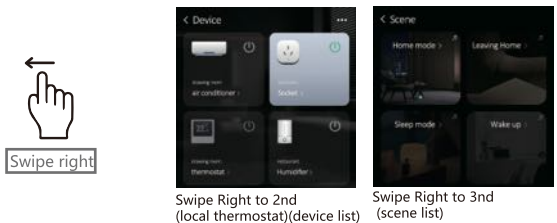
Features Overview:

Quickly add by selecting Add at the bottom of the homepage. Click on it and choose to add multiple modules.



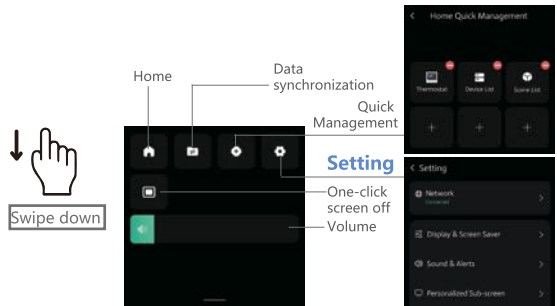
Home Screen Swipe Options

1. In addition to swiping left to access the local thermostat on the sub-screen, swiping continuously to the right will take you to the device list and scene list, as shown below.



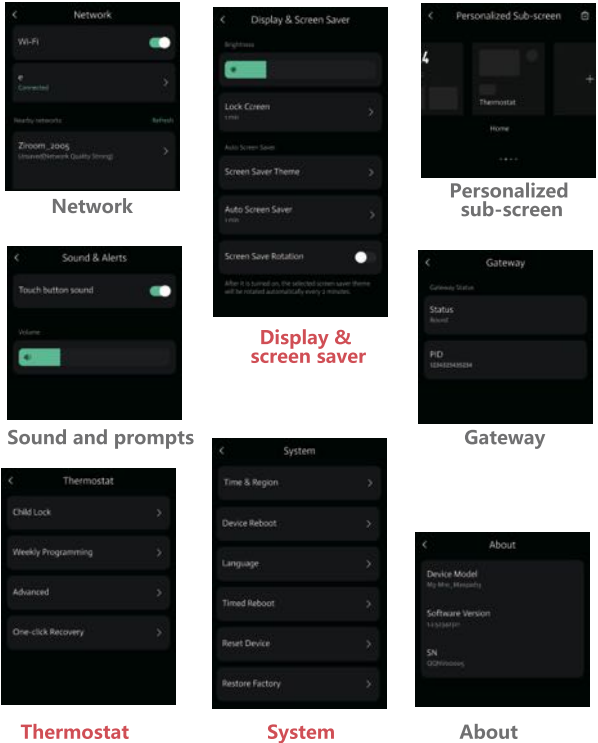
Successfully synchronized scenes and devices from the mobile app will be displayed here. (If they are not displayed, please click the sync icon.).

2. Slide down on the device to access the drop-down function key menu.



Settings Page

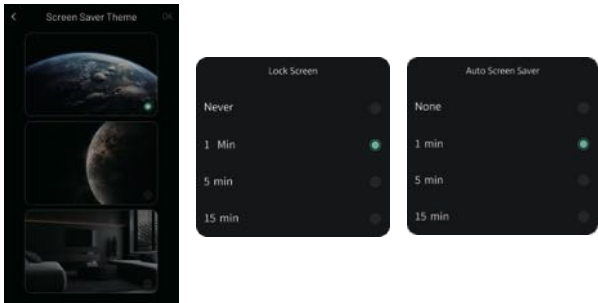
The settings page includes **network** , **Display & Screen saver**, **Sound & Alerts**, **Personalized sub-screen**, **Thermostat**, **Gateway**, **System**, and **About** settings.



Thermostat System About

Display & screen saver setting

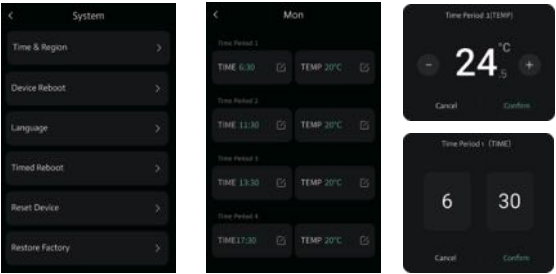
In Display & screen saver setting, you can modify the screen brightness, screen off time, screen wallpaper, etc.



Thermostat setting

Thermostat settings include **Child lock**, **Weekly programming**, **Advanced options**, and **One-click recovery**.

Weekly Programming setting



Default settings for program schedule

Time display	MON.		TUE.		WED.		THU.		FRI.		SAT.		SUN.	
	TIME	TEMP	TIME	TEMP	TIME	TEMP	TIME	TEMP	TIME	TEMP	TIME	TEMP	TIME	TEMP
Period 1	6:00	20	6:00	20	6:00	20	6:00	20	6:00	20	6:00	20	6:00	20
Period 2	11:30	20	11:30	20	11:30	20	11:30	20	11:30	20	12:00	20	12:30	20
Period 3	13:30	20	13:30	20	13:30	20	13:30	20	13:30	20	14:30	20	14:30	20
Period 4	17:30	20	17:30	20	17:30	20	17:30	20	17:30	20	17:30	20	18:30	20

Advanced

Function	Setting and options	Default
Temp Display	Celsius / Fahrenheit	Celsius
Pipe Selection	2 Pipes / 4 Pipes	4 Pipes
Temp Compensation	-9 to 9 °C	-3°C
Deadzone Temp.	0-5°C	1°C
Temp Limit	Min Temp :5-15°C Max Temp :35-45°C	Min 5°C Max 35°C
Energy Saving	CLOSE / OPEN (Energy Saving Temp : 0-30°C)	CLOSE

System setting

The system settings menu interface includes 6 setting options: Time & Region, Device Reboo, Language, Timed Reboot, Reset Device, Restore Factory. You can select the option you wish to configure, enter it, and make the necessary modifications

Service

Your thermostat carries an 24 months warranty from date of purchase. Service out with the warranty period may incur a charge. More detail please contact with us directly.