
KZIG-WC

WIRELESS DOOR/WINDOW CONTACT

Maximise the quality of every interaction with Smart Home & Hospitality Solutions from KEPLER electronics. Operational alone or in conjunction with LOYTEC whole Intelligent solution, this door sensor aids in detecting occupancy for intelligent, automated modifications to a room's configurations. Optimize the entire experience of visitors while simultaneously mitigating energy use and expenses. Automate the activation of lights upon a guest's return after a period of absence, or adjust the temperature to enhance efficiency during periods of room un occupation. Intended just for use with customized Touch Pads from KEPLER Collection.



Features

This door or window opening detector will provide you with automated notifications anytime the door or window is either opened or closed. Moreover, it enhances your capability to establish a correlation between an activity and a certain operation, such as deactivating the Cooling system, receiving remote alerts via LOYTEC/Kepler Home app, and several other functionalities.

Among the components of the KZIG-WC are door and window opening/closing detectors, along with a battery that has a lifespan of five years or 100,000 Trigger.

Through a systematic and sequential approach, the KEPLER Home application simplifies and directs the installation process. Key features of KEPLER Zigbee Opening Detector include window and door contact capabilities. The device may ascertain the status of the opening, either open or closed, and then transmit this information to the Wiser solution via a Zigbee connection. The current battery level is below 10%.

Installation

The door sensor can be installed on door/windows, and any other objects that can open and close. Before installation, please test whether the Door Window sensor can work properly, and make sure the door and frame are spaced correctly to accommodate the sensor.



Two ways to place the sensor:

1. Use a clean and dry towel to clean the area where you want to mount the door sensor. Tear off

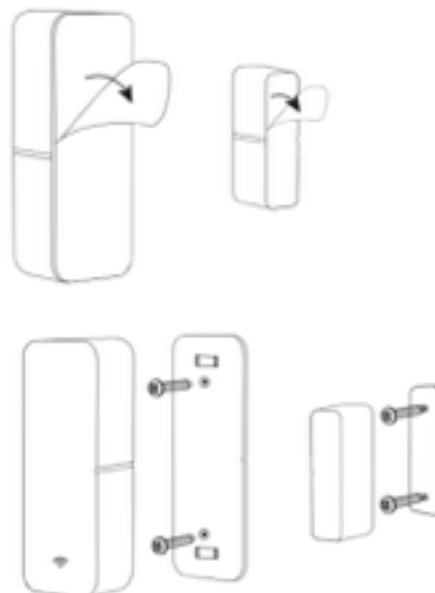
the adhesive tapes to place the sensors you want, press hard for about 10s to fix them well.

The adhesive tapes are for one-time use only.

2. Or you can fix with screws included.

Note:

The magnet part must be placed on the side of the sensor with middle line. And the distance between the sensor and magnet should be less than 10mm.



Specifications

| | |
|----------------------------|--|
| Part No. | KZIG-WC |
| Description | Smart Home Wireless Door/Window Contact |
| Size | 71*25*20 mm (Sensor) 36*10*17 mm (Magnet) |
| Zigbee Frequency | IEEE 802.15.4 |
| Material | ABS |
| Type | Zigbee Connectivity (Wireless) |
| Series | Wireless Home Automation |
| Power supply | Built in LR03-1.5V/AAA*2 (Alkaline Battery) |
| Battery Life | 5 Years / 100,000 Times Trigeer |
| MOBILE APP | Kepler Home / LWEB -APP |
| Working Temperature | 0°C-40°C |
| Working Humidity | 20% - 85% RH |